



ACS

<http://www.acs.co.kr>

DABOM[®] MES

u-Manufacturing for global enterprises

Accumulation of last 24 years of ACS experiences of manufacturing execution application solution aimed to near zero inventory, waiting time, defect and down time that provides sustainable productivity of global distributed manufacturing enterprises using a wired and wireless sensor based M2M(Machine to Machine) for 4M (man, machine, material, method) integration in real time and web service application provide visibility in anytime, anywhere.

USER - LIST

GM DAEWOO POSCO 

CJ  SK HYUNDAI KIA KIA MOTORS
The Power to Surprise

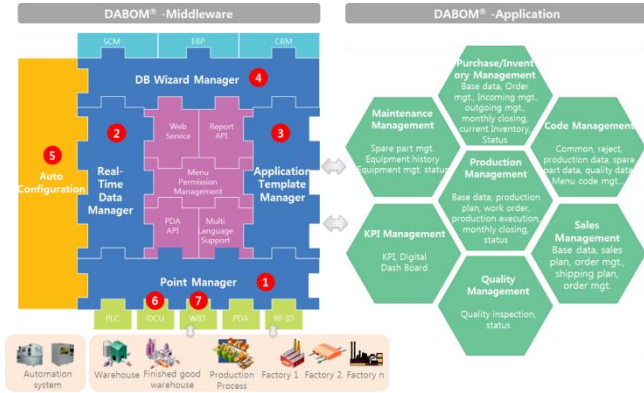
LUK  FAG HYUNDAI MOBIS FLAKOR

 ORION SL Lighting



◆ DABOM system architecture

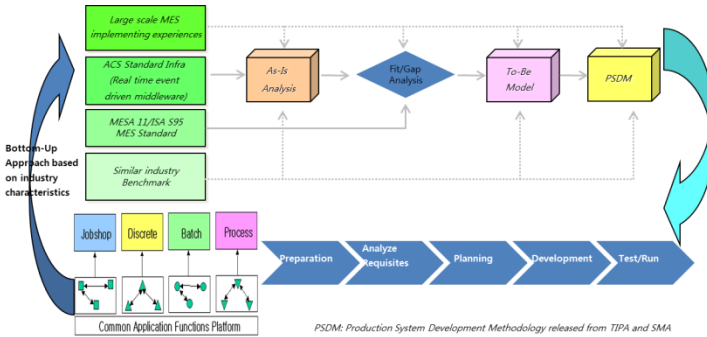
DABOM product consisted of device, middleware and application. Role of middleware provides independence layer between various production resources with common communication platform for reduced software maintenance load and shorten development time. DABOM-Application runs under web service that it can access anytime anywhere.



- ① Point Manager : Common communication protocol module
- ② Real-time Data Manager : Real time data base handling module
- ③ Application Template Manager : Application template generation
- ④ DBWizard Manager: Data base interface module
- ⑤ Auto Configuration : Autonomous 4M resource configuration module
- ⑥ iDCU : Intelligent Data Collection Unit)
- ⑦ iTouch : Thin client touch screen terminal

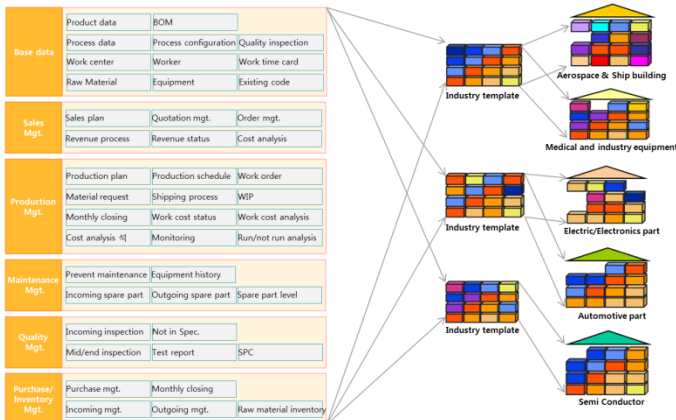
◆ DABOM-MES system features

Building a central management for global distributed multiple factories by web service application and integration for 4M (man, machine, material, method) manufacturing resource in real time.

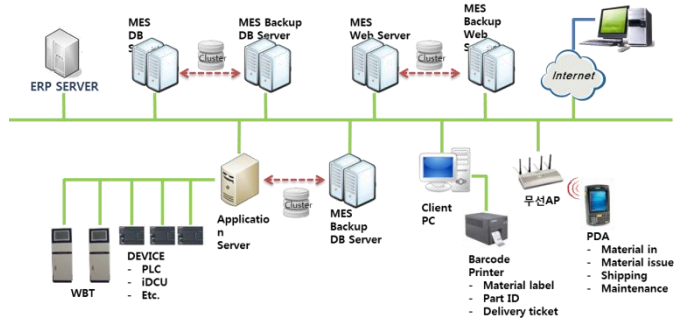


PSDM: Production System Development Methodology released from TIPA and SMA

International standard MES platform application bring a minimum customization.



◆ DABOM-MES system configuration



Recommended specification

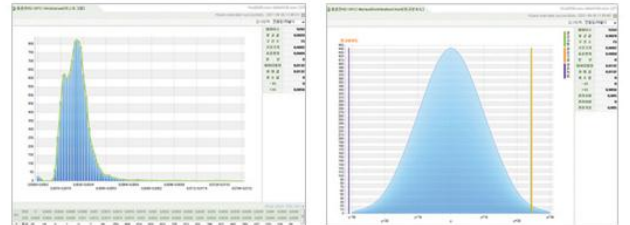
- OS: Windows2008server DB : SQLserver2008
- Client: above IE8.0

◆ Screen

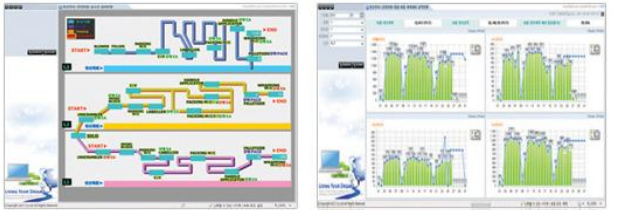
Work order release and load balancing



Quality management: SPC



Real time monitoring and production report



ACS Corp. <http://www.acs.co.kr>

Head Quarter
8th Floor Gasan Business Center, Gasan-dong Geumcheon-Ku, Seoul, Korea 153-803
TEL : +82-2-6900-4600 FAX : +82-2-6900-4610
Branch office
2040 Jinjang Dplex, Jinjang-dong, Puk-ku Ulsan City 685-350
TEL : +82-52-276-4412 FAX : +82-52-576-2856